

THREAT QUOTIENT - TAAM INTEGRATION

This document applies to Classic/Legacy Integrations. You may continue to use these integration configurations. While no active development is happening for these integrations, we continue to provide Classic/Legacy Integrations in the product. You do not have to move to MSI Integrations. If your support engineer or TSC recommends or you choose to move to MSI Integrations, you can take advantage of the latest features and functionality. For more information, see the MSI Integration documentation in the [Integrations Overview \(https://docs.mandiant.com/home/msv-integrations-overview\)](https://docs.mandiant.com/home/msv-integrations-overview).



This integration is not remote capable.

Update Threat Quotient

Identify or create credentials to access Threat Quotient with read access, at minimum.

API Calls

The following API calls are used by Validation Platform.

Purpose	Call
Get Access Token	/token
Get Threat Actors (Paginated)	/adversaries
Get Actor Descriptions	/adversaries/{actor_id}/description
Get Actor Location	/adversaries/{actor_id}/attributes?attribute_name=Country
Get Actor Aliases	/adversaries/{actor_id}/?with=adversaries
Get Actor Malware Used	/adversaries/{actor_id}/malware
Get Actor Attacks (MITRE)	/adversaries/{actor_id}/malware

Update the Security Validation Platform

Prerequisites

Information to gather before you start:

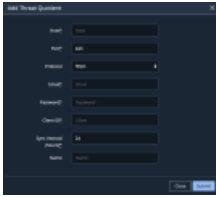
- Identify the host, port, and protocol associated with your Threat Quotient instance
- Identify the email, and password associated with your Threat Quotient account
- Identify your Client ID in the **Settings** section of the Threat Quotient SNYPR Web Portal

Configuration

TO ADD THE THREAT QUOTIENT INTEGRATION

1. Go to **Settings > Integrations**.
2. Click **Add Integration > Threat Quotient**.
3. Enter the Host, Port, and Protocol.
4. Enter the Email, Password, and Client ID.
5. Enter the **Sync Interval** in hours (default: 24 hours).

6. (Optional) Assign a **Name**.
7. Click **Submit**.



(<https://dyzz9obi78pm5.cloudfront.net/app/image/id/629a12d4c9cba0017c2f7dbd/n/threat-quotient.png>)

Threat Quotient

Set up Proxy Assignment

If all outbound connections go through a proxy, you may want to set up a proxy definition and assignment for your integration. For information on setting up your proxy rules, see [Proxy Rules \(https://docs.mandiant.com/home/msv-proxy-rules\)](https://docs.mandiant.com/home/msv-proxy-rules).

Verify connectivity

TO VERIFY CONNECTIVITY TO THE THREAT QUOTIENT INTEGRATION

Click **Test** to verify that:

- The Director can communicate with the integration host on the port and protocol specified.
- The integration credentials are valid and working.